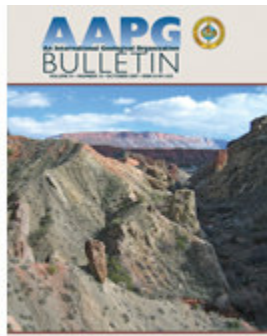


Dave Barthelmy

From: Gerald Buckley [gbuckley@aapg.org]
Sent: Monday, October 15, 2007 10:20 AM
To: daba@wt.net
Subject: Your October AAPG Bulletin Is Available



Your October AAPG Bulletin is **now available**. Enjoy!

- [Geographic Search](#) Draw a rectangle on a map, get quick, high-quality results! A [GIS-UDRIL](#) innovation.
- Changed your contact info lately? Update your records via [the Members Only site](#).

As always, we look forward to [member feedback](#).

Visit the AAPG Online Bookstore [today](#)

[CLICK FOR MORE INFO...](#)

IN THIS ISSUE:

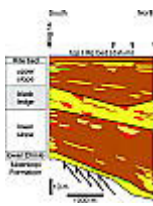


**E&P NOTES: New reservoir model from an old oil field
Garfield conglomerate pool, Pawnee county, Kansas**

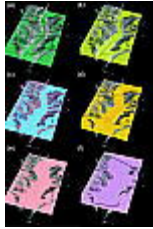
The Garfield conglomerate pool, Kansas, provides a new reservoir model for future oil and gas exploration. The reservoir is an alluvial fan comprised of pebbles, cobbles, and boulders within a fine sand to sandy shale matrix that accumulated in a subtle structural depression. [Read more...](#) Or listen to the [audio abstract](#) now.

**Geologic Notes: Controls on fluvio-lacustrine reservoir
distribution and architecture in passive salt-diapir
provinces: Insights from outcrop analogs**

A high-quality outcrop dataset of fluvio-lacustrine strata in an

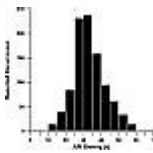


exhumed salt basin of the upper Triassic Chinle Formation, Paradox Basin, Utah, is used as an analog for improved understanding of subsurface datasets of similar structural and sedimentological setting. [Read more...](#) Or listen to the [audio abstract](#) now.



Geohorizon: Three-dimensional geological and synthetic seismic model of Early Permian redeposited basinal carbonate deposits, Victorio Canyon, west Texas

Early Permian carbonate toe-of-slope and basinal deposits outcropping in the Sierra Diablo Mountains, west Texas, are carbonate reservoir analogs. The 3-D seismic signature of these deposits is investigated using a geocellular model, built and populated with facies from measured section data. [Read more...](#) Or listen to the [audio abstract](#) now.



Geohorizon: A review and technical summary of the AAPG/Asociacion Mexicana de Geologos Petroleros Hedberg Research Conference on heavy oil: Origin, prediction, and production in deep waters

The highlights of a joint AAPG/Asociacion Mexicana de Geologos Petroleros (AMGP) Hedberg Research Conference entitled "Heavy Oil: Origin, Prediction, and Production in Deepwater" are summarized. Interest in deepwater exploration is increasing but heavy oil is abundant in this setting, which reduces value and recovery efficiency and increases associated production problems. [Read more...](#) Or listen to the [audio abstract](#) now.



Characteristics of petroleum geology of the Baise Basin in Guangxi, China

New and existing data are integrated to summarize the petroleum geology of the Paleogene Baise basin, Guangzi, China, including oil and gas distribution and the potential for future exploration. This work will also aid exploration in similar lacustrine-faulted basins. [Read more...](#) Or listen to the [audio abstract](#) now.



Hierarchies of overpressure retardation of organic matter maturation: Case studies from petroleum basins in China

The effects of overpressure on organic matter maturation have been examined in three basins in China. Results indicate that differential retardation of maturation occurs within the same overpressured system. Several hierarchies of retardation exist, requiring the use of multiple parameters to understand overpressured systems. [Read more...](#) Or listen to the [audio abstract](#) now.



Copyright 2007 American Association of Petroleum Geologists, P.O.Box 979, Tulsa, OK, 74101-0979, USA.

If you would prefer not to receive email announcements from the AAPG, or if you've changed your email address, please contact us at: 1 (918) 584-2555 or 1 (800) 364-2274 (from the US and Canada) or by [email](#)